

Situation Overview

In recent months, heavy rainfall and flash floods across the country has caused several emergencies, leaving thousands without shelter. More 18,400 homes have been affected. This includes more than 5,000 homes that have been destroyed and an additional 12,700 that have sustained damage. The most affected provinces include Baghlan, Nangarhar, Ghor, Helmand, and Uruzgan.

These events have similarly highlighted the critical inter-linkages of protection issues affecting vulnerable groups. The community level multisectoral rapid assessment has revealed that women, girls, and children under five years old comprise approximately 62 percent of the affected population, with children under five years old constituting around 24 percent. Similarly specific needs have been identified within the affected population, highlighting the presence of 1,798 pregnant women, 2,549 infants, 400 individuals with severe disabilities, 128 vulnerable elderly families, 959 unaccompanied children, 1,782 female-headed households, and 193 individuals people suffering from chronic illnesses.

These findings impress on the need for urgent shelter support to mitigate exacerbating pre-existing vulnerabilities among affected people. The lack of access to adequate shelter not only compromises the safety and dignity of people with specific needs including women and girls, but also restricts their access to essential services and economic opportunities, further entrenching gender disparities. It is particularly detrimental, as it often results in increased exposure to health risks and violence and limits their ability to participate in recovery and rebuilding efforts. The situation is exacerbated for those with specific needs, such as widows and separated or divorced women, who may face additional legal and societal barriers due to the loss of civil documentation and/or property-related documents. According to the MSRAF, an estimated 749 individuals reported having lost their documentation during the incidents.

In response to these events, the Shelter Cluster, along with its partners, has been actively working to provide relief items to those affected. More than 18,000 families have received emergency assistance and non-food items (NFI) to help them cope with the immediate aftermath of the floods. However, the situation remains dire, with both partners and affected families lacking resources to kick start transitional and long term shelter support. USD 24.4M is urgently needed to support the most vulnerable families repair and rebuild their homes with dignity.

With the winter season fast approaching, the window for delivery of construction activities is closing in. Inevitably, the coming weeks are crucial to ensure that those who have been directly affected by this natural disaster events are not left without shelter, and the means to rebuild. It is imperative that these efforts are expedited to provide affected families with the necessary shelter, thereby mitigating the adverse impacts on their health, safety, and economic stability and equally promoting the rights and well-being of women and girls, ensuring they are central to recovery and rebuilding processes.

Critical need for funding to address immediate repair and rebuild needs of affected families, supporting their quick recovery and the restoration of built infrastructure.

Funding Requirements:



24.4M USD



11 May Floods Baghlan, Afghanistan

Shelter Conditions¹



Available Capacity



Urgent Needs²



¹ Figures are based on already completed assessments and are thus, anticipated to rise as joint assessment teams conclude ongoing assessments.
² Similarly included gaps /needs are also based on already completed assessments and are thus, anticipated to rise as joint assessment teams conclude ongoing assessments.

Beyond Emergency Shelter Support...



11 May Floods Baghlan, Afghanistan - Courtesy IOM

The Shelter Cluster priorities include:

- Immediate **need for shelter repair and rebuild assistance** for an estimated 18,461 whose homes are either destroyed or severely damaged, supporting their quick recovery and the restoration of built infrastructure, prior to the onset of the winter season. Notably, the NER is tremendously and adversely impacted by the winter season, with most areas becoming inaccessible and cut off by heavy snow. Partners have no capacity to support affected families' repair or rebuild their homes beyond the emergency phase.
- **Replenishment of emergency stockpiles** including tents, NFI kits to ensure the cluster has adequate in-country capacities to respond promptly to sudden emergencies.
- Advocate for inclusion of both **structural and non-structural DRR approaches** at the household and community level to reduce flood risk. This includes construction of embankments, inclusion of flood-control elements in shelter design, establishment of early warning systems, and zoning regulations to prevent construction and/or settlements in flood-prone areas.
- **Support adequate site selection and settlement planning** enabling the relocation of communities residing in flood-prone areas, as part of a broader disaster and risk management strategy.

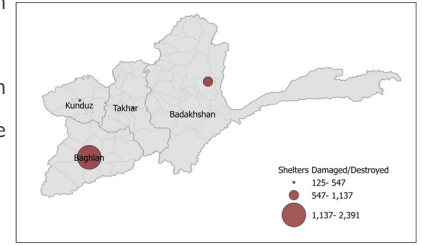
Northeastern Region



 Shelters Damaged/
Destroyed

4,200

- On 10 and 11 May, flash floods affected 21 districts across Baghlan, Badakhshan and Takhar provinces.
- As of the latest reports, 180 individuals have lost their lives, and more than 242 have been injured. The disaster has also led to the destruction or damage of 3,390 homes, leaving many without shelter.
- Among the affected people, 51 were children and 50 were women.
- Based on initial reports and assessments, the province where most damage has been reported is Baghlan with 3,080 shelters damaged/destroyed.
- In addition to above, 399 homes had been damaged or destroyed by other flood events prior to the incident of 10/11th May.
- Assessments and distribution of emergency shelter and NFI assistance is underway in affected areas with 4,023 NFIs and 1,253 emergency shelter kits prepositioned ready for distribution in Baghlan Province from IOM, UNHCR, UNICEF, SCI, AKAH, Islamic Relief, Hullo Trust and IRC.
- Nonetheless, partners have no resources to replenish relief items and support families repair and rebuild their homes with dignity.



Natural Disasters Damaged/Destroyed Shelters Map



11 May Floods Baghlan, Afghanistan - Courtesy IOM



4,103

Received Emergency Assistance



2,537

Shelter Repair
GAP



1,663

Transitional Shelter
GAP



6.3M USD

Funding Requirements

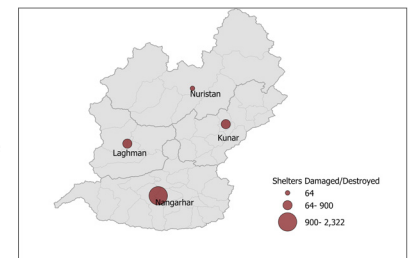
Eastern Region



 Shelters Damaged/
Destroyed

4,173

- Since the beginning of the year, flash floods and heavy rainfall in Nangarhar, Kunar, Nuristan, and Laghman provinces, have resulted in devastating fatalities, injuries, and damages.
- 95 people have been killed, more than 431 injured, and 3278 houses are severely damaged over 885 homes completely destroyed or damaged. Nangarhar and Kunar provinces report the highest needs and impact.
- In addition to the above, joint assessments are underway to identify families eligible for emergency shelter assistance. Initial reports indicate that approximately 140 households were reportedly affected by recent heavy rainfall and floods in late July.
- Partners in the region have severely limited capacity to address shelter repair and transitional shelter needs. Only 64 families will receive support to repair their homes.



Natural Disasters Damaged/Destroyed Shelters Map



4,151

Received Emergency Assistance



3,224

Shelter Repair
GAP



885

Transitional Shelter
GAP



4.7M USD

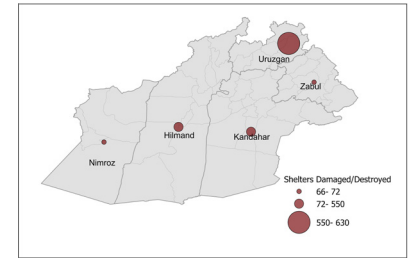
Funding Requirements

Southern Region



Shelters Damaged/
Destroyed
1,821

- Since the beginning of the year, heavy rainfall in the South region has resulted in devastating fatalities, injuries and damage.
- 29 people have been killed, 31 injured, and over 1,831 homes destroyed or damaged across five provinces. Province with the highest needs is Uruzgan, where 7 districts have been affected, 11 people have killed, 12 injured, and over 640 homes damaged/destroyed; followed by Kandahar with over 550 homes reported to be damaged/destroyed.
- Assessments and the distribution of emergency shelter and non-food item (NFI) assistance were completed in the southern region by the end of May. However, when considering long-term support, partners in the region have almost no capacity to address shelter repair and transitional shelter needs.



Natural Disasters Damaged/Destroyed Shelters Map

↓ ↓ ↓
1,821
Received Emergency Assistance

🔨 1,278
Shelter Repair
GAP

🏠 463
Transitional Shelter
GAP

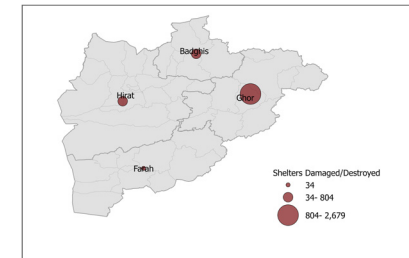
🏠 2.2M USD
Funding Requirements

Western Region



Shelters Damaged/
Destroyed
4,133

- The West region has experienced significant impact due to heavy rainfall, with 91 fatalities and 142 injuries reported.
- A total of 4,133 homes have been destroyed or damaged in the provinces of Hirat, Ghor, Badghis, and Farah.
- Approximately 2,679 households in Ghor province have been affected by recent floods, with assessments and distribution of emergency shelter and non-food item (NFI) assistance underway.
- The capacity to address repair and transitional shelter needs is limited, with only 158 families expected to receive support for home repairs.



Natural Disasters Damaged/Destroyed Shelters Map

↓ ↓ ↓
4,133
Received Emergency Assistance

🔨 2,233
Shelter Repair
GAP

🏠 1,742
Transitional Shelter
GAP

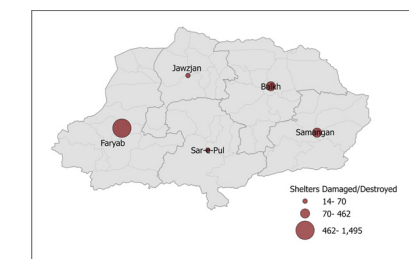
🏠 6.3M USD
Funding Requirements

Northern Region



Shelters Damaged/
Destroyed
2,462

- Since the beginning of the year, heavy rainfall, floods in the North region have resulted in devastating fatalities, injuries and damages.
- 70 people have been killed, 59 injured, and 2,464 homes destroyed or damaged in Balkh, Faryab, Samangan & Sar-e-pul provinces.
- Partners capacity to address repair and transitional shelter needs remains limited with a small number of families (101 families) expected to receive support to repair their homes.



Natural Disasters Damaged/Destroyed Shelters Map

↓ ↓ ↓
2,464
Received Emergency Assistance

🔨 1,554
Shelter Repair
GAP

🏠 807
Transitional Shelter
GAP

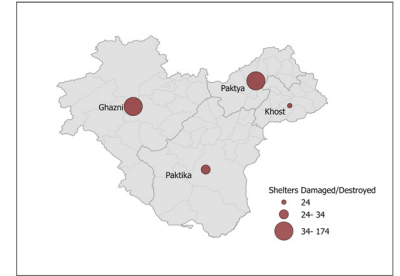
🏠 3.3M USD
Funding Requirements

Southeastern Region



Shelters Damaged/
Destroyed
342

- Since the beginning of the year, heavy rainfall in the Southeast region has resulted in devastating fatalities, injuries and damages.
- 7 people have been killed, 11 injured, and 294 homes destroyed or damaged in Ghazni, Khost, Paktya, Paktika provinces.
- Partners have no resources to support affected families repair their homes.



Natural Disasters Damaged/Destroyed Shelters Map



342
Received Emergency Assistance



318
Shelter Repair
GAP



24
Transitional Shelter
GAP



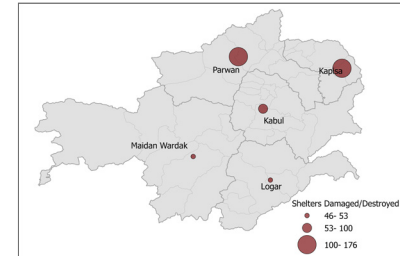
0.30M USD
Funding Requirements

Central Region



Shelters Damaged/
Destroyed
622

- Since the beginning of the year, heavy rainfall, in the Central region has resulted in devastating fatalities, injuries and damages.
- 11 people have been killed, 2 injured, and 622 homes destroyed or damaged in Parwan, Logar, Kapisa, Kabul, Panjshir & Maidan Wardak provinces.
- Assessments and distribution of emergency shelter and NFI assistance is completed.
- Partners capacity to address repair and transitional shelter needs remains limited with some families (53 families) expected to receive support to repair and rebuild their homes.



Natural Disasters Damaged/Destroyed Shelters Map



609
Received Emergency Assistance



518
Shelter Repair
GAP



52
Transitional Shelter
GAP



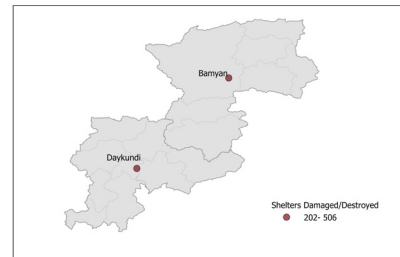
0.5M USD
Funding Requirements

Central Highland Region



Shelters Damaged/
Destroyed
708

- Since the beginning of the year, heavy rainfall in Daykundi and Bamyān have resulted in devastating damages with 708 homes destroyed or damaged across both provinces.
- Assessments and distribution of emergency shelter and NFI assistance is Completed. Partners have no resources to support affected families repair their homes.



Natural Disasters Damaged/Destroyed Shelters Map



708
Received Emergency Assistance



679
Shelter Repair
GAP



29
Transitional Shelter
GAP



0.5M USD
Funding Requirements